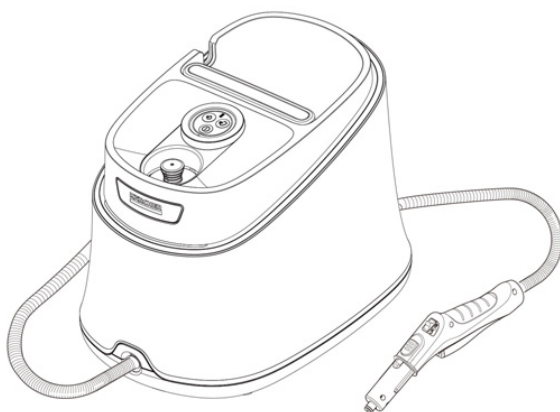


KÄRCHER

SC 3 Deluxe



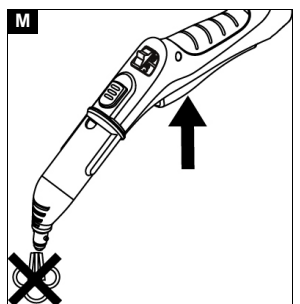
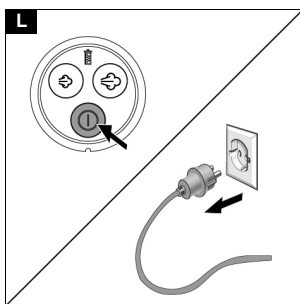
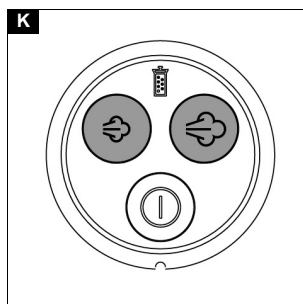
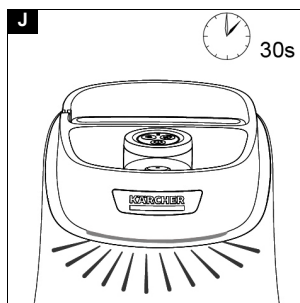
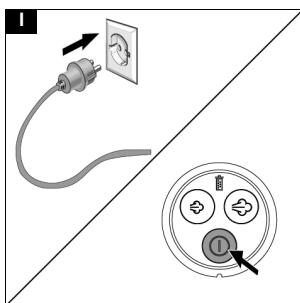
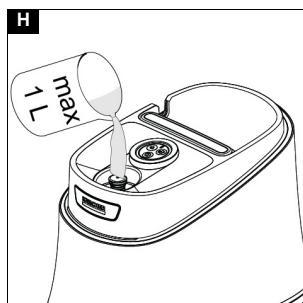
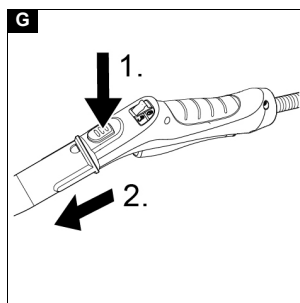
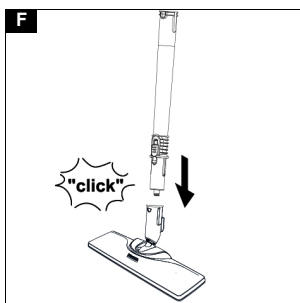
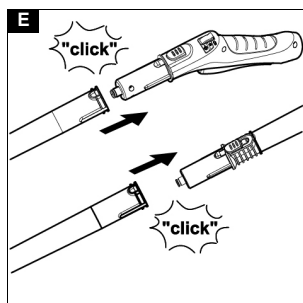
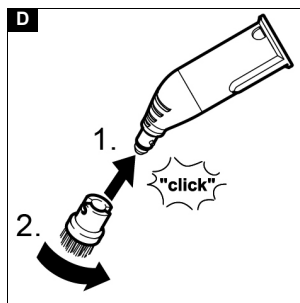
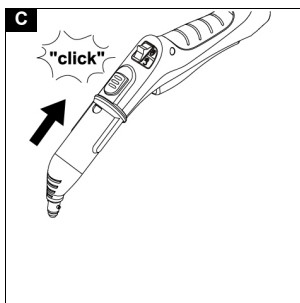
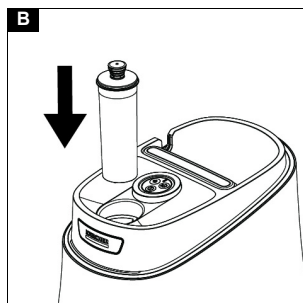
**Register
your product**
www.kaercher.com/welcome

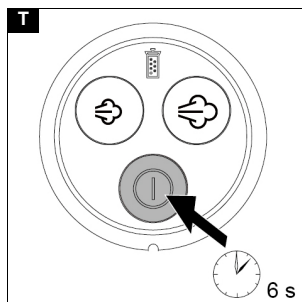
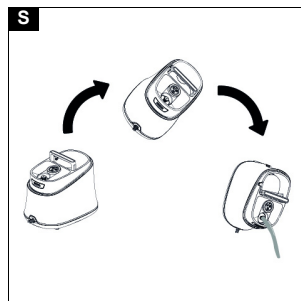
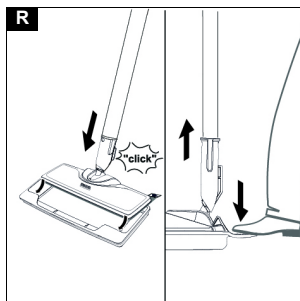
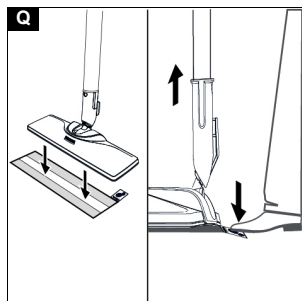
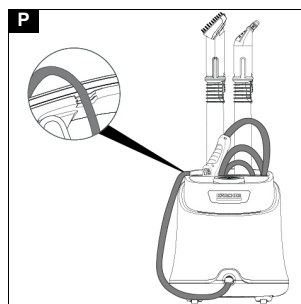
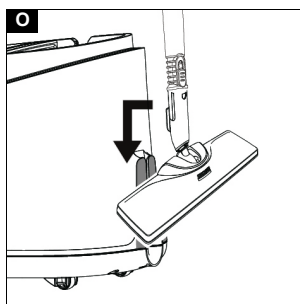
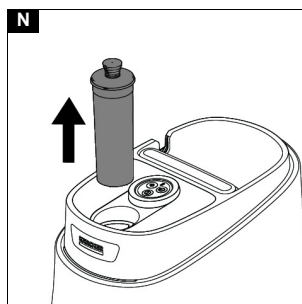


EAC



97699950 (11/24)





Contents

Environmental protection.....	5
Accessories and spare parts	5
Scope of delivery.....	5
Warranty	5
Safety devices	5
Description of the unit.....	5
Initial start-up.....	6
Installation	6
Operation.....	6
Important application instructions.....	7
How to use the Accessories	7
Care and service	9
Troubleshooting guide	10
Technical data	10

Environmental protection



The packing materials can be recycled. Please dispose of packaging in accordance with the environmental regulations.



Electrical and electronic devices contain valuable, recyclable materials and often components such as batteries, rechargeable batteries or oil, which - if handled or disposed of incorrectly - can pose a potential danger to human health and the environment. However, these components are required for the correct operation of the device. Devices marked by this symbol are not allowed to be disposed of together with the household rubbish.

Notes on the content materials (REACH)

Current information on content materials can be found at: www.kaercher.de/REACH

Accessories and spare parts

Only use original accessories and original spare parts. They ensure that the appliance will run fault-free and safely.

Information on accessories and spare parts can be found at www.kaercher.com.

Scope of delivery

The scope of delivery for the appliance is shown on the packaging. Check the contents for completeness when unpacking. If any accessories are missing or in the event of any shipping damage, please notify your dealer.

Warranty

The warranty conditions issued by our relevant sales company apply in all countries. We shall remedy possible malfunctions on your appliance within the warranty period free of cost, provided that a material or manufacturing flaw is the cause. In a warranty case, please contact your dealer (with the purchase receipt) or the next authorised customer service site.

(See overleaf for the address)

Further warranty information (if available) can be found in the service area of your local Kärcher website under "Downloads".

Safety devices

⚠ CAUTION

Risk of injury due to missing or modified safety devices!

Safety devices are provided for your own protection.

Do not bypass, remove or render ineffective any safety devices.

Symbols on the device

(according to type of appliance)

	Risk of burns, surface of appliance becomes hot during operation
	Risk of scalding from steam
	Read the operating instructions
USE WATER ONLY	Only fill water without additives into the water reservoir

Pressure controller

In case of inadmissibly high pressure in the event of a fault, a safety valve relieves the pressure into the atmosphere.

Fuse

The fuse prevents the device from overheating. If the device overheats, the fuse disconnects the device from the power supply.

Before re-commissioning the device, contact the responsible KÄRCHER Customer Service.

Description of the unit

The maximum amount of equipment is described in these operating instructions. Depending on the model used, there are differences in the scope of delivery (see packaging).

For the illustrations, refer to the graphics page.

- ① Decalcification cartridge
- ② On/Off switch
- ③ Reduced steam volume
- ④ Indicator light (red) - replace decalcification cartridge.
- ⑤ Maximum steam volume
- ⑥ Accessory storage area
- ⑦ Park bracket for floor nozzle
- ⑧ Carrying handle
- ⑨ Mains connection cable with mains plug
- ⑩ Steam gun
- ⑪ Steam lever
- ⑫ Unlocking button
- ⑬ Child lock
- ⑭ Steam hose
- ⑮ Spotlight nozzle
- ⑯ Round brush
- ⑰ * Round brush (large)
- ⑱ Power brush
- ⑲ Round brush with brass bristles
- ⑳ Manual nozzle

- ②1 Microfibre cover for manual nozzle
- ②2 Extension tubes (2 x)
- ②3 Unlocking button
- ②4 Floor nozzle
- ②5 Hook and loop fastener
- ②6 Microfibre floor cloth (1 x)
- ②7 * Carpet glider
- ②8 * Microfibre floor cloth (2 x)

* optional accessory, depending on the configuration

Initial start-up

ATTENTION

Device damage due to calcification

The decalcification cartridge only works properly if you adjust the device to the local water hardness before operating it for the first time.

Set the device to the local water hardness.

Set the device to the current water hardness before using it in an area with a different water hardness (e.g. after a move)

1. Insert the decalcification cartridge into the opening and push it so that it is firmly in place.

Illustration B

2. Set the water hardness, see chapter *Setting the water hardness*.

Installation

Installing accessories

1. Push the open end of the accessory onto the steam gun so that the unlocking button on the steam gun engages.

Illustration C

2. Push the open end of the accessory onto the spot-light nozzle.

Illustration D

3. Connect the extension tubes to the steam gun.
 - a Push the 1st extension tube onto the steam gun so that the unlocking button on the steam gun engages.
The connection pipe is connected.
 - b Push the 2nd extension tube onto the 1st extension tube.
The connection pipes are connected.

Illustration E

4. Push the accessory and / or the floor nozzle onto the free end of the extension tube.

Illustration F

The accessory is connected.

Disconnecting accessories

1. Move the child lock back.
The steam lever is locked.
2. Push the unlocking button and pull the parts apart.

Illustration G

Operation

Filling water

The water reservoir can be filled at any time.

ATTENTION

Damage to the device

Unsuitable water can block the nozzles or damage the water level indicator.

Do not use condensation from the clothes dryer for filling.

Do not use collected rain water for filling.

Do not use cleaning agents or other additives (e.g. scents) for filling.

1. Fill the water reservoir with a maximum of 1 l of tap water.

Illustration H

Switching on the device

ATTENTION

Device damage due to incorrectly set water hardness

The decalcification cartridge only works properly if the device is adjusted to the local water hardness. The device may calcify if the water hardness is set incorrectly. Adjust the device to the local water hardness before first operation, see chapter *Setting the water hardness*.

Note

When steaming for the first time after removing and re-inserting the decalcification cartridge, the steam jet may be weak or irregular, and individual drops of water may be expelled. The device requires a short running-in period in which the decalcification cartridge fills with water. The steam volume that is expelled increases constantly until the maximum steam volume has been reached after approx. 30 seconds.

1. Place the device on a firm surface.
2. Connect the mains plug into a socket.
3. Press the On/Off switch.

Illustration I




4. The LED strip is in fading red.
5. The LED strip lights up in a constant green after approx. 30 seconds. The device is ready for use.

Illustration J

Regulating the steam volume

The expelled steam volume is regulated by pressing the steam volume button. Two different steam volume buttons are available:

Illustration K

	Maximum steam volume
	Reduced steam volume
	No steam - child lock Note In this position, the steam lever cannot be operated.

Note

The maximum steam volume is always selected when the device is switched on.

1. Press the steam lever after setting the steam volume.
2. Before starting cleaning, point the steam gun at a cloth until steam is expelled evenly.

Topping up the water

If there is a water shortage, the LED strip rapidly flashes red.

For constant steam output, the water has to be topped up through the cover of the decalcification cartridge.

When topping up the water, the decalcification cartridge remains secured in the device.

Note

The device is equipped with dry-run protection for the pump. If the pump runs dry for a longer period, e.g. because the decalcification cartridge is not correctly inserted, the pump switches off and the red water shortage indicator light flashes.

To be able to operate the device again, the device has to be switched off and back on again. In the process, you must make sure that the cartridge has been inserted correctly and there is enough water in the water reservoir.

1. Fill the water reservoir with a maximum of 1 l of tap water through the cover of the decalcification cartridge.

The LED strip lights up in a constant green.

Interrupting operation

In order to save energy, we recommend that you switch off the device for breaks in operation of longer than 20 minutes.

1. Press the On/Off switch.

Switching off the device

1. Press the On/Off switch.

Illustration L

The device has been switched off.

2. Press the steam lever until no more steam flows out.

Illustration M

The steam boiler is depressurised.

3. Move the child lock back.

The steam lever is locked.

4. Remove the mains plug from the socket.

ATTENTION

Device damage due to water putrefaction

If the device is not put into operation for more than 2 months, the water in the reservoir may putrefy. Drain the water reservoir before breaks in operation.

5. Remove the decalcification cartridge from the device.

Illustration N

Storing the device

1. Hang the floor nozzle in the park bracket.

Illustration O

2. Connect the extension tubes to the large mounts for accessories.

3. Connect a manual nozzle and spotlight nozzle to each extension tube.

4. Wrap the cable and place it in the accessory storage area.

5. Place the small round brush in the accessory storage area.

6. Put the steam hose in the accessory storage area.

Illustration P

7. Store the device in a dry location that is protected from frost.

Important application instructions

Cleaning the floor areas

We recommend sweeping the floor or vacuum cleaning it before using the appliance. In this way the floor will be cleared of dirt and loose particles before the wet cleaning.

Freshening up textiles

Prior to using the appliance, always check the compatibility of the textiles at a concealed point: Steam down

the textile, allow it to dry and then check it for any change in colour or shape.

Cleaning coated or painted surfaces

ATTENTION

Damaged surfaces

Steam can loosen wax, furniture polish, plastic coatings or paint and edge band from edges.

Do not direct the steam at glued laminated edges as the edge band may loosen.

Do not use the appliance for cleaning unsealed wood or parquet floors.

Do not use the appliance for cleaning painted or plastic coated surfaces such as kitchen or living room furniture, doors or parquet.

1. To clean these surfaces, steam a cloth briefly and use it to wipe over the surfaces.

Glass cleaner

ATTENTION

Glass breakages and damaged surfaces

Steam can damage sealed points of the window frame and, at low outside temperatures, lead to tension on the surface of window panes and hence to glass breakages. Do not direct the steam at sealed points on the window frame.

At low outside temperatures, heat up the window panes by gently steaming the full surface of the glass.

- Clean the window area with a hand nozzle and cover. To remove the water, use a squeegee or wipe the surfaces dry.

How to use the Accessories

Steam gun

The steam gun can be used for the following applications without accessories:

- For removing slight creases from the hanging clothing items: Steam the clothing item from a distance of 10-20 cm.
- For wiping damp dust: Steam a cloth briefly and use it to wipe over the furniture.

Spotlight nozzle

The spotlight nozzle is suitable for cleaning areas, joins, fittings, drains, sinks, WCs, blinds or radiators that are difficult to access. The closer the spotlight nozzle is to the soiled area, the greater the cleaning efficiency will be as the temperature and steam volume are at their highest at the nozzle opening. Larger lime deposits can be treated before steam cleaning with a suitable detergent. Allow the detergent to soak in for approx. 5 minutes and then steam it off.

1. Slide the spotlight nozzle onto the steam gun.

Illustration C

Round brush (small)

The small round brush is used for cleaning stubborn dirt. Stubborn dirt can be removed more easily by brushing.

ATTENTION

Damaged surfaces

The brush may scratch sensitive surfaces.

It is not suitable for cleaning sensitive surfaces.

1. Fit the round brush to the spotlight nozzle.

Illustration D

Round brush (large)

The large round brush is suitable for cleaning large rounded surfaces, e.g. wash basin, shower tray, bath tub, kitchen sink.

ATTENTION

Damaged surfaces

The brush may scratch sensitive surfaces.

It is not suitable for cleaning sensitive surfaces.

1. Fit the large round brush to the spotlight nozzle.

Illustration D

Power brush

The power brush is used for cleaning stubborn dirt.

ATTENTION

Damaged surfaces

The brush may scratch sensitive surfaces.

It is not suitable for cleaning sensitive surfaces.

1. Fit the power brush to the spotlight nozzle.

Illustration D

Round brush with brass bristles

The round brush with brass bristles is used for cleaning stubborn dirt.

ATTENTION

Damaged surfaces

The brush may scratch sensitive surfaces.

It is not suitable for cleaning sensitive surfaces.

1. Fit the round brush with brass bristles to the spotlight nozzle.

Illustration D

Manual nozzle

The hand nozzle is used for cleaning small areas that can be washed down, shower cubicles and mirrors.

1. Push the hand nozzle onto the steam gun according to the spotlight nozzle.

Illustration C

2. Pull the cover over the hand nozzle.

Floor nozzle

The floor nozzle is used for cleaning washable wall and floor coverings e.g. stone floors, tiles and PVC floors.

ATTENTION

Damage due to build-up of steam

Heat and moisture can lead to damage.

Check the heat resistance and steam effect on an inconspicuous area using a minimal volume of steam prior to use.

Note

Detergent residue or care emulsions on the surface to be cleaned can lead to streaks during steam cleaning, which will disappear however once these have been used several times.

We recommend sweeping the floor or vacuum cleaning it before using the device. In this way the floor will be cleared of dirt and loose particles before the wet cleaning commences. Work slowly on surfaces that are heavily soiled so that the steam has longer to take effect.

1. Connect the extension tubes with the steam gun.

Illustration E

2. Push the floor nozzle onto the extension tube.

Illustration F

3. Fasten the floor cleaning cloth to the floor nozzle.

- a Place the floor cleaning cloth with the hook and loop fastener strips pointing upwards on the floor.
- b Place the floor nozzle onto the floor cleaning cloth, applying slight pressure.

Illustration Q

The floor cleaning cloth will stick to the floor nozzle of its own accord due to the hook and loop fastener.

Removing the floor cleaning cloth

1. Place one foot on the bottom corner of the floor cleaning cloth and lift the floor nozzle up.

Illustration Q

Note

Initially, the floor cleaning cloth's hook and loop fastener strip is very strong and cannot be removed from the floor nozzle easily. After the floor cleaning cloth has been used several times and washed, it is easier to remove from the floor nozzle and it has reached the optimum adhesion.

Parking the floor nozzle

1. Hang the floor nozzle in the park bracket during breaks in work.

Illustration O

Carpet glider

The carpet glider is used for freshening up carpets.

ATTENTION

Beware of damaging the carpet glider and carpet

Contamination on the carpet glider, as well as heat and moisture penetration, can result in the carpet being damaged.

Prior to the application, also check the heat resistance and impact of steam on the carpet at an insignificant spot using as small an amount of steam as possible. Observe the cleaning instructions from the carpet manufacturer.

Prior to using the carpet glider, make sure that the carpet has been vacuumed and that stains have been removed.

Prior to application and following operating pauses, remove any possible water accumulation (condensate) in the appliance by means of evaporating the condensate into a drain (without floor cleaning cloth / with accessories).

Only use the carpet glider with a floor cleaning cloth on the floor nozzle.

Steam clean with a weak steam stage when using the carpet glider.

In order to prevent too much moistening and to avoid the risk of damage due to temperature effects, do not direct the steam continuously onto one spot (maximum 5 seconds).

Do not use the carpet glider on deep-pile carpets.

Fastening the carpet glider to the floor nozzle

1. For fastening the floor cleaning cloth to the floor nozzle, please refer to chapter *Floor nozzle*.

Illustration Q

2. Using a little force, allow the floor nozzle to slide into the carpet glider and engage there.

Illustration R

3. Start cleaning the carpet.

Removing the carpet glider from the floor nozzle

⚠ CAUTION

Beware of burns to your feet

The carpet glider can heat up during the steaming process.

Do not operate or remove the carpet glider bare-footed or using open sandals.

Only operate or remove the carpet glider using suitable footwear.

1. Press the strap on the carpet glider downwards using your toecap.
2. Lift the floor nozzle upwards.

Illustration R

Care and service

Draining the water reservoir

ATTENTION

Device damage due to water putrefaction

If the device is not put into operation for more than 2 months, the water in the reservoir may putrefy.

Drain the water reservoir before breaks in operation.

1. Press the On/Off switch.
The device has been switched off.
2. Pull the mains plug out of the socket.
3. Remove the accessories from the accessory holders.
4. Remove the decalcification cartridge from the device.
5. Drain the water reservoir.

Illustration S

Replacing the decalcification cartridge

ATTENTION

Device damage and shortened service life

If the replacement intervals (indicator light) for the decalcification cartridge are not observed, there is a risk of device damage and the service life of the device may be shortened.

Observe the replacement intervals (indicator light).

Note

The replacement intervals depends on the local water hardness. Areas with hard water (e.g. III/IV) have a higher replacement interval than areas with soft water (e.g. I/II).

Indicator lamp at end of the run time

The "decalcification cartridge indicator light" indicates when the decalcification cartridge has to be replaced:

- The indicator light flashes 2 hours before the run time expires.
- The indicator light flashes more quickly 1 hour before the run time expires.
- Once the run time for the decalcification cartridge has expired, the indicator light and the LED strip light lights up in continuously red and the pump switches off automatically in order to prevent device damage.

Inserting the decalcification cartridge

ATTENTION

Device damage

There is a risk of damage to the device if the used decalcification cartridge is re-used.

Work carefully in order to prevent mixing up the cartridges.

Note

When steaming for the first time after removing and re-inserting the decalcification cartridge, the steam jet may be weak or irregular, and individual drops of water may be expelled. The device requires a short running-in period in which the decalcification cartridge fills with water. The steam volume that is expelled increases constantly until the maximum steam volume has been reached after approx. 30 seconds.

1. Press the Off switch.
The device has been switched off.
2. Remove the decalcification cartridge.

3. Insert the new decalcification cartridge.
4. Press the On switch.
The device is switched on.
5. Press and hold the Maximum steam volume and Reduced steam volume buttons at the same time until the "Replace decalcification cartridge" goes out. This means that the reset is complete.
6. Allow the device to heat up.
7. Press and hold the steam lever for approx. 30 seconds to vent the decalcification cartridge.

Setting the water hardness

ATTENTION

Device damage due to calcification

Without a decalcification cartridge, the device may calcify if the water hardness is set incorrectly.

Always work with a decalcification cartridge.

Set the device to the local water hardness.

Set the device to the current water hardness before using it in an area with a different water hardness (e.g. after a move).

Note

Your water board or municipal utilities authority can provide information on hardness of tap water.

The water hardness setting is stored until a new setting (e.g. after a move) is made. The device is set to the highest water hardness (level IV) in the factory. The device indicates the set water hardness with flash pulses.

Water hardness levels and flash pulses

Hardness range	°dH	mmol/l	Number of flash pulses	Interval between flash pulses
I Soft	0-7	0-1.3	1x	4 seconds
II Medium	7-14	1.3-2.5	2x	
III Hard	14-21	2.5-3.8	3x	
IV Very hard	>21	>3.8	4x	

Note

The anti-calcification effect of the decalcification cartridge is activated as soon as the device is filled with water and put into operation. Lime in the water is absorbed by the granulate in the decalcification cartridge. Additional descaling is not required.

Note

The granulate in the cartridge can discolour on contact with water due to the mineral content in the water, which is no cause for concern and has no negative effects on the device, cleaning work or the functionality of the cartridge.

Note

Do not pause for longer than 15 seconds when setting as the device will otherwise be set automatically to the last selected water hardness or the highest water hardness set during initial start-up.

1. Make sure that the device is switched off.
2. Press the ON/OFF button and hold it for 6 seconds.

Illustration T

3. The decalcification cartridge indicator light flashes and signals the current water hardness setting with the number of pulses.
4. Press the Reduced steam volume button repeatedly to set the lower water hardness level.

5. Press the Maximum steam volume button repeatedly to set the higher water hardness level.
6. Release the Reduced/Maximum steam volume button.
The flash pulse for the set water hardness is indicated.
7. Repeat the process as necessary until the desired water hardness level has been achieved.

Note

When the steam volume is pressed, the flash pulse for the water hardness level is not indicated.

8. Press and hold the ON/OFF button for 4 seconds to save the setting for the water hardness level. The decalcification cartridge indicator light lights up.

Care of accessories

(Accessories - depending on scope of delivery)

Note

The micro fibre cloths are not suitable for dryer.

Note

For optimum cleaning performance, we recommend machine washing the cloths once before first use.

When washing, observe the notes on the washing tag. Do not use any liquid softeners as this will affect the ability of the cloths to pick up dirt.

1. Wash the floor cleaning cloths and covers at a maximum temperature of 60 °C in the washing machine.

Troubleshooting guide

Malfunctions often have simple causes that you can remedy yourself using the following overview. When in doubt, or in the case of malfunctions not mentioned here, please contact your authorised Customer Service.

⚠ WARNING

Risk of electric shock and burns

Trying to eliminate faults while the appliance is connected to the mains or has not yet cooled down is always dangerous.

Remove the mains plug.

Allow the appliance to cool down.

The LED strip flashes red

The dry-run protection for the pump is activated.

1. Switch the device off and back on again.
2. Make sure that the decalcification cartridge has been inserted correctly and there is sufficient water in the reservoir.

No water in the water reservoir.

1. Top up the water reservoir, see chapter *Topping up the water*.

The steam lever cannot be pressed

The steam lever is locked with the child lock.

- Move the child lock forward.

The steam lever is released.

No / little steam although there is water in the reservoir

The decalcification cartridge has not been inserted or has been inserted incorrectly.

- Insert the decalcification cartridge or insert it correctly.

The decalcification cartridge has been removed while topping up the water.

- Leave the decalcification cartridge in the device when topping up.

New decalcification cartridge has been inserted.

- Press and hold the steam lever continuously. The full steam output is reached after approximately 30 seconds.

Red "Replace decalcification cartridge" indicator light lights up / flashes

The run time of the decalcification cartridge ends early.

- Insert the new decalcification cartridge and reset the maintenance indicator, see chapter *Replacing the decalcification cartridge*.

The maintenance indicator was not reset after replacement of the decalcification cartridge.

- Press and hold the Maximum steam volume and Reduced steam volume buttons at the same time until the "Replace decalcification cartridge" indicator light goes out after inserting the decalcification cartridge, see chapter *Replacing the decalcification cartridge*.

The LED strip is in constantly red and no steam although there is water in the reservoir

Run time for the decalcification cartridge has expired

- Insert the new decalcification cartridge and reset the maintenance indicator, see chapter *Replacing the decalcification cartridge*.

The maintenance indicator is not reset after replacement of the decalcification cartridge.

- Press and hold the Maximum steam volume and Reduced steam volume buttons at the same time until the indicator light of "Replace decalcification cartridge" goes out after inserting the decalcification cartridge, see chapter *Replacing the decalcification cartridge*.

1. 2 pcs filters for handheld vacuum cleaner.

Technical data

		SC 3 Deluxe
Electrical connection		
Voltage	V	220 - 240
Phase	~	1
Frequency	Hz	50 - 60
Degree of protection		IPX4
Protection class		I
Device performance data		
Heating capacity	W	1900
Maximum operating pressure	MPa	0.35
Heating-up time	s	30
Continuous steaming	g/min	40
Maximum steam blast	g/min	100
Filling quantity		
Water reservoir	l	1.0
Dimensions and weights		
Weight (without accessories)	kg	3.3
Length	mm	361
Width	mm	250
Height	mm	282

Subject to technical modifications.



THANK YOU!

MERCI! DANKE! ¡GRACIAS!



Registrieren Sie Ihr Produkt und profitieren Sie von vielen Vorteilen.

Register your product and benefit from many advantages.

Enregistrez votre produit et bénéficiez de nombreux avantages.

Registre su producto y aproveche de muchas ventajas.

www.kaercher.com/welcome



Bewerten Sie Ihr Produkt und sagen Sie uns Ihre Meinung.

Rate your product and tell us your opinion.

Évaluer votre produit et dites-nous votre opinion.

Reseñe su producto y díganos su opinión.



www.kaercher.com/dealersearch

Alfred Kärcher SE & Co. KG
Alfred-Kärcher-Str. 28-40
71364 Winnenden (Germany)
Tel.: +49 7195 14-0
Fax: +49 7195 14-2212

